



DÖNER GRILL

MODEL: 1 BURNER - BM - GAS



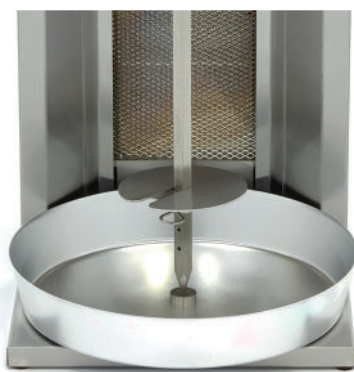
SPECIFICATIONS

Power	3.32 kW
Connection	
Nett Weight	8.5 Kg
Gross Weight	11.0 Kg
Machine Dimensions	H530 x W365 x D457 mm
Packaging Dimensions	H485 x W380 x D420 mm
Packaging Volume	0.08 CBM
Packaging Material	Carton Box with Foam
HS Customs Code	732111900012
EAN Code	8719632124702
Article Number	09370200

Professional grill for Döner / Gyros / Kebab
Equipped with 1 gas burner
Stainless steel protective mesh (AISI 310)
Equipped with stainless steel drip tray
Housing made of stainless steel
Skewer and meat plate made of stainless steel
The meat skewer must be turned manually
Skewer can rotate left and right
Skewer is adjustable
Easy to clean
Max. capacity: 10 kg meat
Diameter meat plate: 120 mm
Dimensions skewer: 12 x 12 mm
Skewer length: 300 mm
Gas consumption: 0.262 m3/h

- 👑 HIGH QUALITY / LOW PRICES
- 👑 24 / 7 SUPPORT & SERVICE
- 👑 IMMEDIATELY AVAILABLE FROM STOCK
- 👑 TECHNICAL DEPARTMENT & WARRANTY
- 👑 EXCELLENT CUSTOMER SATISFACTION

CE



Stainless steel doner grill equipped with drip tray



With adjustable skewer for perfect preparation.



Easy to dismantle and clean